

Iowa Vocational Rehabilitation Services

Region 10 Report

January 25, 2018

Region 10 Demographics for Persons with Disabilities (PWD)

COUNTY	PERCENTAGE of PWD
Benton	11.6%
Cedar	11.2%
Iowa	11.5%
Johnson	7.3%
Jones	12.8%
Linn	10.3%
Washington	13.3%
Population of Region 10	457,238
Population of PWD in Region 10	44,636
Percentage of PWD	9.7%

IVRS Region 10 Case Load

Cedar Rapids	1098
Iowa City	1156
Regional Total	2254
Percentage of PWD Served by IVRS in Region 10	5%
Veterans In IVRS Services	Region—54 State—260

Opportunities in Process:

- Cedar Rapids IVRS staff serve in partnership with group called the “The Employment Partners.” At present, the “Partners” are developing Veteran themed job event to include preparatory career boot camp and reverse job fair. The group is coming off a successful boot camp event held for consumers of WIOA programs at Iowa Works Center in Cedar Rapids this past fall.
- ICAO presently has OJT opportunity taking place in collaboration with VA Medical Center in Coralville that stemmed from collaboration between Iowa City VR Business Development Specialist, VA Human Resources and a VR job candidate.
- At present IVRS is co-sponsoring 4 students in first ever Pilot Project with Kirkwood Community College and LEA partners to deliver on site certificate training in Customer Service, Health Care Careers, and Welding.
- IVRS Legislative Breakfast to be held on February 14th at the Iowa State Capitol building.
- Continued efforts underway to expanded awareness and collaboration with school partners through training at state level for school and AEA administrators on WIOA. Local efforts underway to support training between IVRS, LEA and AEA team members.
- Both offices are happy to now be fully staffed.

High School Transition Services

	Cedar Rapids	Iowa City	Total
Potentially Eligible Students Served	550	172	722
New Applicants	66	22	88
Students in Active Services	158	108	266

- Local partnerships that increase IVRS capacity to serve youth with disabilities:
 - Transition Alliance Program – Monticello/Midland Consortium
 - Making the Grade (Goodwill)—Marion Independent / Iowa City Schools
 - IVRS Intermediary Network ---North Cedar / Tipton, Sector Events for CR VR Office...anticipate future expansion to with in other counties in region.
- Business partners such as CEC, Kum & Go, and BFHO have contributed to delivery of range of career activities and work based learning experiences for youth with disabilities.
- Counselor Specialist James Smith provides regional leadership and discussion with IVRS staff to support continued development of best practices of in transition service delivery.
- Upcoming Youth Events
 - Architecture, Construction and Engineering (ACE) Sector Career event on February 6th tour construction projects at Mercy Hospital.
 - Health Care Sector Board Career Event in March
 - Summer career workshops, sector board themed camps, and relevant community experiences are in development between IVRS & IDB teams for summer 2018.
 - Iowa City Office set to expand upon STEM career camp to rural areas in addition to continued efforts in Johnson/Washington counties.

Successful Employment Outcomes

Count of CaseNumber	ClosureAreaOffice		
SOCCategory	CDR	IAC	Grand Total
11 - Management	1		1
21 - Community and Social Services		1	1
29 - Healthcare Practitioners and Technical	1		1
31 - Healthcare Support	2	1	3
35 - Food Preparation and Serving Related	3	8	11
37 - Building and Grounds Cleaning and Maintenance	1	6	7
39 - Personal Care and Service	2	2	4
41 - Sales and Related	1	2	3
43 - Office and Administrative Support	1	5	6
45 - Farming, Fishing, and Forestry		1	1
49 - Installation, Maintenance, and Repair	1	2	3
51 - Production	2	3	5
53 - Transportation and Material Moving	1	2	3
Grand Total	16	33	49

Outcomes by Employers (10/01/2017 to 12/31/2018)

Count of CaseNumber	ClosureAreaOffice	IAC	Grand Total
EmployerName	CDR	IAC	Grand Total
Adaptive Daycare		1	1
ARC Vending		1	1
AW Welt		1	1
Brother's Market	1		1
BRUGGERS BAGELS		1	1
Capitol Vending		1	1
Caseys	2		2
Casey's/Kernals	1		1
Chromehorse	1		1
Dairy Queen Store		1	1
Dept. of Children and Family Services		1	1
Durham School Services		1	1
Edgewood Animal Hospital	1		1
El Ranchero		1	1
Fareway		1	1
Galaxy 16	1		1
Gumption	1		1
Handicare Day Care Center		1	1
Home Choice LLC		1	1
Home Health watch care-givers	1		1
HYVEE		1	1
Independent Contractor	1		1
Kum & Go		1	1
Marcus Sycamore Theater		1	1
Marriott Hotel and Convention Center		1	1
McGrath Auto		1	1
Midwest Janitorial Services		1	1
New Pioneer Co-Op		1	1
NIS		1	1
Pat's Cleaning Service	1		1
PetSmart		1	1
PickWick		1	1
Pizza Ranch		1	1
Quaker Oats	1		1
River of Life		1	1
Sam's Club	1		1
Service Master		1	1
Texas Roadhouse		1	1
Thomas Cardella		1	1
Toyota Iowa City		1	1
TPG (The Professional Group)	1		1
Unity Point	1		1
University of Iowa		1	1
US Army		1	1
US Cellular		1	1
VMC Management Corp		1	1
Walgreens		1	1
WalMart	1		1
Grand Total	16	33	49

STATE DATA
CENTER OF
IOWA - A
PROGRAM OF
THE STATE
LIBRARY OF
IOWA

AND

THE OFFICE
OF PERSONS
WITH
DISABILITIES

IOWANS WITH DISABILITIES: 2017

JULY 2017

On July 26, 1990, President George H.W. Bush signed into law the Americans with Disabilities Act, guaranteeing equal opportunity for people with disabilities in public accommodations, commercial facilities, employment, transportation, state and local government services and telecommunications.

368,036

The number of people in Iowa in 2015 who have some kind of disability. They represent 11.9% of the civilian, noninstitutionalized population.

32.7%

Percentage of people 65 and older in 2015 with a disability, the highest of any age group.

31,589

Number of children under 18 in 2015 who have disabilities. This amounts to 4.3% of the population under 18 years of age.

180,139

The number of people aged 18-64 with a disability in 2015 or 9.6% of the population aged 18-64.

12.1%

The percent of males in Iowa in 2015 with a disability. This compares to 11.8% of females.

42.6%

The percent of households receiving food stamps which have one or more persons with a disability in 2015.

59,992

The number of households receiving food stamps which have one or more persons with a disability in 2015.

9,666

Number of Iowa grandparents with a disability living with grandchildren under 18 in 2015.

37.7%

Percentage of above grandparents with a disability who are responsible for grandchildren.



Specific Disabilities

123,105

The number of Iowans in 2015 reporting an inability to hear conversations or a serious hearing loss.

6.1%

Percentage of population age 5 and over with an ambulatory disability in 2015.

63,497

The number of Iowans age 5 and over in 2015 who reported that a disability made it difficult to perform self-care activities such as dressing, bathing, or getting around inside the home.

109,360

The number of noninstitutionalized Iowans age 18 and over in 2015 who reported an independent living disability that made it difficult to go outside the home alone to shop or visit a doctor's office.

57,891

The number of Iowans of any age in 2015 who reported a disability of blindness or serious difficulty seeing even when wearing contacts or glasses.

132,818

Number of people with limitations in cognitive functioning or who have a mental or emotional illness that interferes with daily activities, including those with Alzheimer's disease and intellectual disabilities. This included people with one or more problems that interfere with daily activities, such as frequently being depressed or anxious, trouble getting along with others, trouble concentrating and trouble coping with stress.

Veterans

56,109

Number of Iowa veterans in 2015 with a disability representing 29.1% of Iowa veterans.

36.7%

The percent of the veteran with population 18 to 64 years of age below the poverty level who have a disability.

52.3%

The percent of the veteran population 65 years and over below the poverty level in 2015 who have a disability.

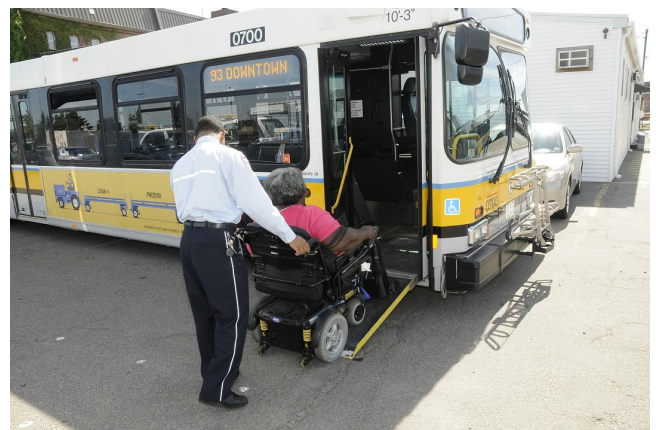
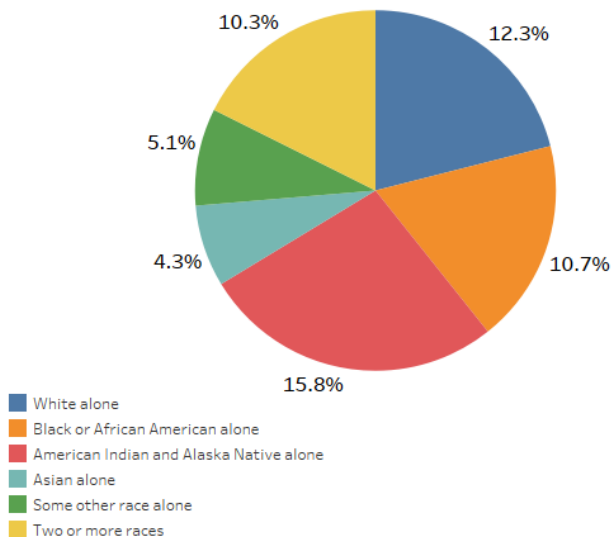
97.4%

Percent of transit buses nation-wide that were lift or ramp-equipped as of 2011.

Source:

http://www.rita.dot.gov/bts/sites/rita.dot.gov.vts/files/publications/national_transportation_statistics/html/table_01_08.html

Disability in Iowa by Race: 2015



7.0

The percent of the population in 2015 with a disability in Iowa that was Hispanic or Latino



STATE DATA
CENTER OF
IOWA A
PROGRAM THE
STATE LIBRARY
OF IOWA

Miller Building
1112 E. Grand Ave
Des Moines, Iowa 50327
Phone: 800-248-4483
Fax: 515-242-6543
E-mail: census@lib.state.ia.us
www.iowadatacenter.org



This program is supported by the Institute of Museum and Library Services under the provisions of the Library Services and Technology Act as administered by the State Library of Iowa.

OFFICES OF PERSONS WITH
DISABILITIES

Lucas State Office Building
Second Floor
321 E. 12th St
Des Moines, IA 50319
515-242-6334
jill.avery@iowa.gov
www.humanrights.iowa.gov

The data presented in this report are for the civilian noninstitutionalized population which excludes people in prisons, nursing homes, and active duty military

Data Source (unless otherwise noted) :
U.S. Census Bureau,
American Community Survey, 2015
Photos by the U.S. Census Bureau

Employment

50,180

The number of lowans age 18 to 64 with a disability who were employed in 2015 in a full-time status. 55.1% of lowans with a disability worked at least part-time.

9.6%

Percent of the labor force with a disability of some type.

9.6%

The unemployment rate in 2015 for lowans with a disability. The unemployment rate in Iowa at that time was 4.2%



78,222

The number of Iowa disabled workers in 2015 receiving benefits under Social Security's Old Age, Survivors, and Disability Insurance (OASDI) program.

Source:

http://www.socialsecurity.gov/policy/docs/factsheets/cong_stats/2015/ia.pdf

Health Insurance

97.5%

Percent of children under age 18 in Iowa that have a disability and are covered by insurance in 2015.

6.0%

Percent of lowans 18 to 64 years of age with a disability that had no health insurance coverage in 2015.

32.7%

The percent of lowans age 65 and over that have a disability and are covered by insurance in 2015.

356,277

The number of lowans with disabilities that have health insurance coverage in 2015. This is 96.8% of all persons with disabilities in Iowa.

Income and Poverty

\$19,607

Median earnings for lowans age 16 and over with disabilities with earnings in 2015. The median earnings for lowans age 16 and over without disabilities is \$30,964.

21.5%

The poverty rate for lowans with disabilities in 2015. The poverty rate for lowans without disabilities is 12.2%.